



SPRING 2011

seeds



The Garden Growers

Quad Cities Community Gardening

A New Garden in Bettendorf

The Garden Growers has some great news! A new garden is under way in Bettendorf, on Scott County Extension's property at 875 Tanglefoot Lane. It will be finished in time for this gardening season.

The garden will have eleven, 8'x14' in-ground, garden plots, and one 8'x8' children's garden. It will also have eight, 4'x4' raised beds for intensive, square-foot gardening. Some of the raised beds will be wheel-chair accessible, and some will be 18" tall and have a sitting surface for older gardeners.

We are so excited to finally be able to establish a community garden in Bettendorf. For many years we tried to expand community gardening programs to other parts of Scott County, but couldn't find the right space for a garden. After The Garden Growers became a permanent program of Iowa State University, Scott County Extension, we decided to build a garden on Extension's property.

The new garden will have multiple uses. In addition to being a community garden, it will be an outdoor classroom for adults and children who participate in ISU Scott County Extension gardening classes, and it will serve as a demonstration garden to groups and individuals who plan to start their own gardens but don't know how.

If you would like to rent one of the garden plots at the new garden, or at one of our other gardens, please call us, we'll be happy to send you an application form. In keeping with our mission to promote gardening and healthy lifestyles, we will rent the plots for only \$10 per year, plus a \$20 refundable deposit.

The Garden Growers has a tool library that includes a Mantis roto-tiller, spades, garden rakes, garden hoes, trowels, and garden hoses that we loan to registered community gardeners at no additional cost to them. We also have children's gardening tools.

Volume 12, Issue 1

In This Issue

A New Garden in Bettendorf	1
Bettendorf Garden Plan	2
Gardening Tips	3
Help our Programs Grow	4

Seeds is a publication of The Garden Growers

Editor: Julia Blazevic

Design: Angela Hunt

The Garden Growers
 875 Tanglefoot Lane
 Bettendorf, IA 52722
 (563) 359-7577
 e-mail: juliab@iastate.edu
www.qcgardengrowers.org

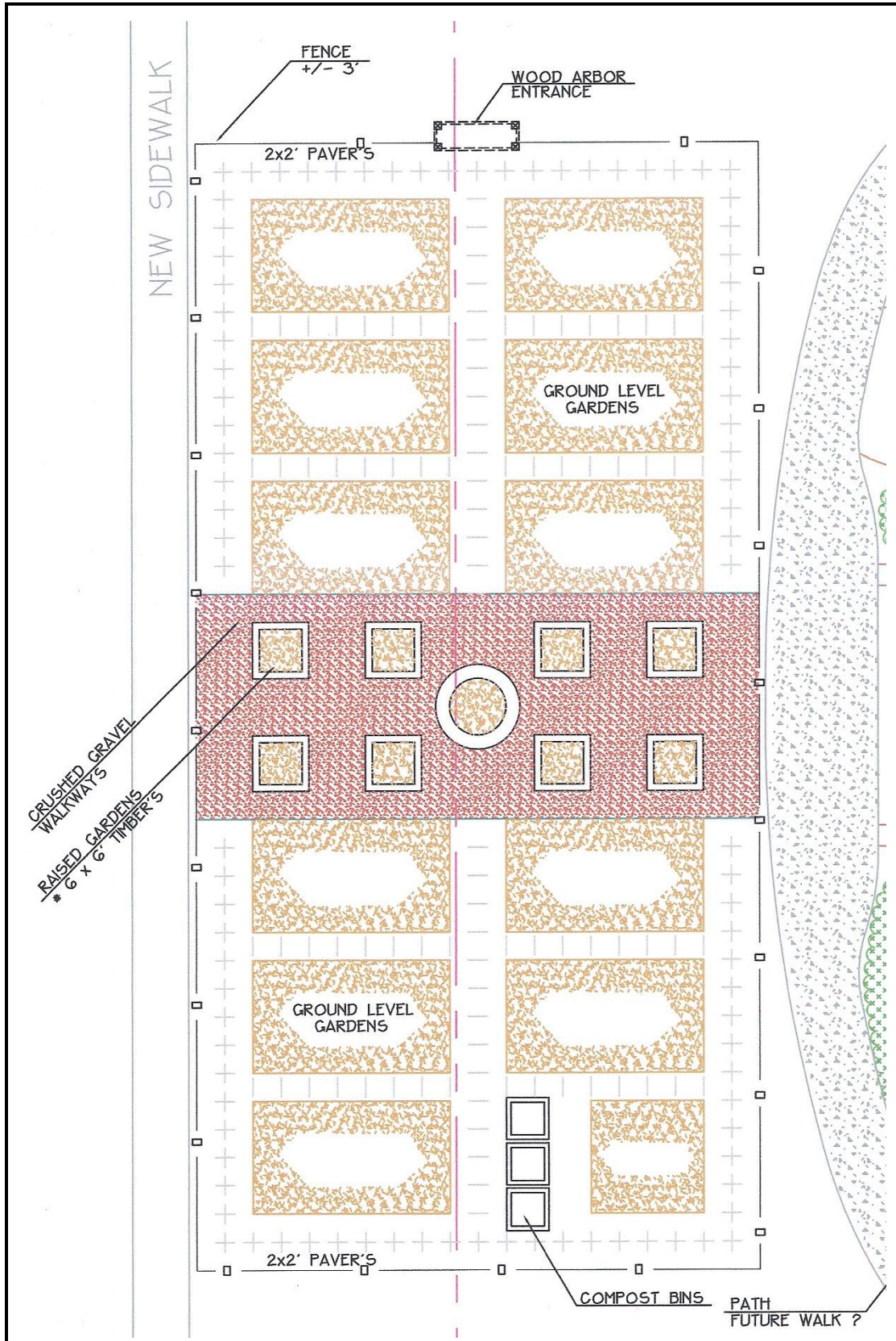
If you've never gardened before, don't be discouraged. Scott County Extension Master Gardeners will be available to help you every step of the way.

I would like to acknowledge Riverboat Development Authority, Scott County Regional Authority, and Community Foundation of the Great River Bend whose funding made this garden possible.

Sincerely,

Julia Blazevic, The Garden Growers Director
Iowa State University Scott County Extension

Landscape Plan of The Garden Growers' New Garden in Bettendorf



seeds

Gardening Tips...

...container vegetable gardening

If you live in an apartment, condo or have a shady backyard and there is no community garden in your neighborhood, consider container vegetable gardening. If you have a windowsill, patio or just a doorstep, you can grow vegetables in containers. You can even grow them indoors all year round!

Advantages of container gardening:

- They need little space and can be different shapes and sizes
- They can be moved around to "catch" the sun
- They need less weeding
- The soil heats up faster so heat-loving plants grow well
- Vegetables can be grown in hanging baskets
- Containers can be decorative

Disadvantages of container gardening:

- They usually need daily watering
- Initial cost of soil mixture and containers can be high

...raised bed vegetable gardening

If you have space for a garden, but it is limited, raised bed vegetable gardening is similar to growing in containers, just on a larger scale. It is like container gardening with an open bottom so plant roots can grow deeper into the existing ground. If you have poor, sandy, rocky, or wet soil, the raised bed is an ideal solution for you.

Advantages of raised bed vegetable gardening:

- More efficient use of space in your garden
- Your garden gets a cleaner and tidier look
- Soil warms up faster in the spring which can give you an earlier start and harvest
- Soil is less compacted as you don't walk on it
- Drainage is better
- There is less weeding
- There is less bending as you plant, weed and water your garden
- Raised bed can be of any height to suit your needs - you can even put a ledge to sit on

Disadvantages for raised bed vegetable gardening:

- It takes time and effort to build
- Cost involved in building raised beds
- Beds may need more watering than conventional gardens during hot weather



The Garden Growers

Quad Cities Community Gardening

Yes, I want to continue to support gardening programs in the Quad Cities!

Name(s) _____

Address _____

City _____ State _____ Zip _____

Phone _____

E-mail _____

Donation: \$500 \$75
 \$250 \$50
 \$100 Other \$ _____

Please mail to: The Garden Growers
875 Tanglefoot Lane
Bettendorf, IA 52722

Your donation is tax deductible.

Helpful Tips to Green Your Garden from The Sierra Club

These easy green tips for your garden will help reduce your carbon footprint!

Be water wise - Don't waste water. Your lawn only needs .5 to 1.5 inches of water per week.

Protect plants without pesticides - Garlic and cayenne can be used to deter pesky aphids. Coffee and eggshells can be sprinkled around the base of plants to repel ants, snails, and slugs.

Gardener's Gold - The process of composting will turn your food scraps into nutrient rich soil to fertilize your garden naturally. You may even start a community compost pile and invite your neighbors to contribute whatever raw material and hard work they can to the compost pile in your backyard.

Grow your own herbs - Basil, thyme, oregano, sage, and parsley are great herbs for beginning gardeners. Place your plants in a spot where they'll receive at least six hours of sunlight. Keep the soil moist and enjoy homegrown herbs all year long.



The Garden Growers

Quad Cities Community Gardening

875 Tanglefoot Lane
Bettendorf, IA 52722

Help our Programs Grow

- Spread the word about The Garden Growers to friends and neighbors who love to garden.
- Find a site that could benefit from a garden or green space.
- Tell us of a garden that can be included in the Great Garden Showoff this summer.
- Volunteer at the 8th Annual Great Garden Showoff.
- Help us keep community gardens clean.
- Make a donation.

*To learn more about how you can help
call (563) 359-7577
or email juliab@iastate.edu*

seeds

